

2019



Design & Development by
Alma Design





Company Profile



About Us

- **Alma Capital Holding Group** was founded in 2016 in Hong Kong.
 - **Alma Capital Holding Group** is a Management Company for commercial and financial services.
 - **Alma Capital Holding Group** chose Hong Kong as our Headquarters because Hong Kong is one of the world's leading international financial centres.
 - **Alma Capital Holding Group** are somewhat unique in the funding and commercial services industry, in so far as, that in addition to being able to set up competitive funding programs, Alma has the in-house capability to project manage, design, engineer, construct and deliver the project to an international standard and within programme and budget.
 - **Alma Capital Holding Group** make your investment dreams a reality, whether you are a business entrepreneur, an institutional investor, or an individual preparing for the future; we can help you achieve your goals through our best services.
 - **Alma Capital Holding Group** carefully selects independent, professional managers who specialize in investing.
 - **Alma Capital Holding Group** is looking forward to providing the best services to its customers and maintaining them with the highest standards of quality and professionalism.
 - **Alma Capital Holding Group** is managed by a team of specialists from various departments who merge and manage key corporate areas to ensure the continued success of companies.
- **Alma Capital Holding Group** a full service financial group delivering the personalised service that clients desire by providing customized solutions to their goals .
 - **Alma Capital Holding Group** is regarded as a leader in providing financing for projects and commodities
 - The main focus of Alma Capital Holding Group is delivering high customer service, meeting its customers' demands and providing reliable reports.
 - **Alma Capital Holding Group** is highly engaged in its strategy and commitment of delivering high quality of customer service.
 - Alma Capital Holding Group is the quick way to find finance for your business.
 - **Alma Capital Holding Group** is backed-up by a team of Business Finance Specialists who are experts in small business lending.
 - Alma Capital Holding Group also work in conjunction with Healthcare practitioners and operators who have the ability to set up, support and manage hospitals and clinics to deliver first world standards of service.
 - **Alma Capital Holding Group** also have consistently made a company policy of using local resources, labour, expertise and professional assistance in the regions in which we work, to supplement and support the international companies and consultants involved in the projects.
 - **Alma Capital Holding Group** is unequivocally poised to makes things easier for suppliers and clients alike.



❖ Funding Projects:

- We have a funding capability for new or existing projects, government and private projects. (Industrial, Commercial, Real Estate, Agricultural, Aviation, Construction, Telecommunication, Transportation, and Petroleum/Oil/Gas) in any part of the world.
- We can replace or add to existing lending facilities which may be currently provided by other institutions.
- Funding Capacity for private projects start from USD/EURO 100 Million and government projects start from USD/EURO 1 Billion.
- We can offer a repayment break of 1 year to 2 years without interest and can fund over a period of 10 years.
- Interest rates start from 4% to 6% per annum.
- Repayment can be made in on instalments, monthly, quarterly, semi-annual, or annually subject to agreement.
- Guarantees accepted include Certificate of Deposit (CD), Bank Guarantee (BG) or Standby Letter of Credit (SBLC) from top rated 50 World Bank and we accepted Sovereign Guarantee from Central Bank.
- Ratio of guarantee required to the amount of funding can start from 20%.
- Procedures typically can take from 7 to 15 days and will be a first payment from 30 days to 45 days.



❖ Supply & Funding Commodities:

- Suppliers for all products and commodities worldwide.
- We have a significant funding capability for foods products and can assuredly make things easier for suppliers and clients alike.
- We specialise in supplying sugar, rice, frozen poultry, frozen meat and edible oils (sunflower oil, corn oil, palm oil and other vegetable oils) and other food products internationally.
- We are not manufacturers or wholesalers and nor do we have our own storage and warehouse facilities to store commodities but we have a number of agreements direct with selected manufacturers, producers and suppliers from several different countries of the world.
- We have been involved in this business internationally for many years and have a recognised ability and knowledge in food products via our large global network of suppliers worldwide.
- Our share of supply into the market has grown annually in countries around the world.
- We excel at providing our customers the best competitive price, high quality, international specification and payment facilities on all products.
- We have all the required potential needed to support a sustained development in a constantly changing world environment and we can provide any commodity within our range at a very competitive price.
- If your company is looking for a strategy to funding commodities to fill your orders, or simply to support growth, contact our Team. We hope you can join us to become a part of our team and enjoy making good profits by engaging with us for a large volume of business for the long term.



❖ Construction:

- We would confirm that we have no difficulty in our ability to fund and turn-key delivery of projects to an International standard in conjunction with its associate companies and international partners and we are adept at providing turnkey solutions, and are able to work closely with their preferred suppliers to deliver projects on time, within budget and to the highest standards of customer care.
- Alma Capital Holding Group was formed to provide a multi-disciplined service to clients wishing to carry out large and diverse projects across the full range of the Construction Industry.
- Alma Capital Holding Group was been involved in all forms of Construction working with both Contractors, Consultants, Government Bodies, Medical Institutions and assembled a unique and in depth knowledge of all forms of construction, system build, fast track delivery, fit outs for all types of commercial and residential construction forms including multi storey office and apartment complexes, public buildings, and infra structural projects, throughout the UK & Ireland.
- Residential, Commercial, Hospitals, Hotels, Industrial Buildings, Stadiums and sports plants, leisure centers. Civil works and MEP integrated systems. Low-cost and precasting solutions for popular target housing and standard / ordinary buildings.
- Depending on type and size of projects, Alma Capital Holding Group involves the most suitable European company (company partner) to carry out projects.

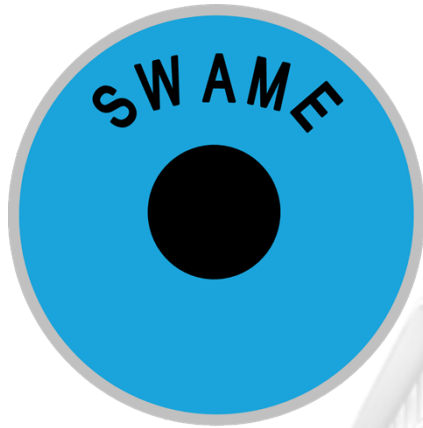


❖ Project Management:

- Alma Capital Holding Group's main function and specialisation is the financing and turn-key delivery of projects to an International standard.
 - One of its fundamental and strategic partners with which it works and co-operates is PSA Project Management Limited.
 - PSA have offices in the UK and Ireland and associate offices in Germany, Belgium, Malta and Dubai.
 - PSA has a proud record of expertise and a wealth of experience in all forms of construction from Medical, Educational, Commercial, Residential and Industrial.
 - PSA values its practical approach to problem solving and full support for its clients and partners, across all sectors of industry.
 - PSA Project Management has a proven knowledge in assessing each project individually, assembling the correct team based on both local reserves, labour and resources and then combining with its international partners and colleagues to deliver the highest and well recognised standards.
 - PSA actively encourages its clients and associates to become involved in their own projects and to extend the benefits to the communities in which it works and operates.
 - PSA Project Management is adept at providing turnkey solutions, and are able to work closely with their preferred suppliers to deliver projects on time, within budget and to the highest standards of customer care.
- **PSA Project Management in conjunction with its associate companies and international partners can offer the following services :-**
 - Site Selection & Strategic Project Planning.
 - Procurement.
 - Design.
 - Value Engineering.
 - Project & Construction Management.
 - Cost Management & Quantity Surveying.
 - Contract Administration.
 - Interior Design.
 - Development Consultancy.
 - Feasibility & Financial Appraisals.
 - **The primary focus of PSA is:-**
 - Analyse and understand the clients' requirements.
 - Review, appoint and lead a selected team of industry appropriate consultants and professional practices.
 - Appraise the design and engineering to ensure fit for purpose and value for money.
 - Determine and work within an agreed budget.
 - Tender and appoint high quality Construction contractors to deliver and complete the project as a focused team.



Our Partners



MAS GROUP INTERNATIONAL



Our Contractors



Contractors Companies approved by Alma Capital Holding Group



Our Banks

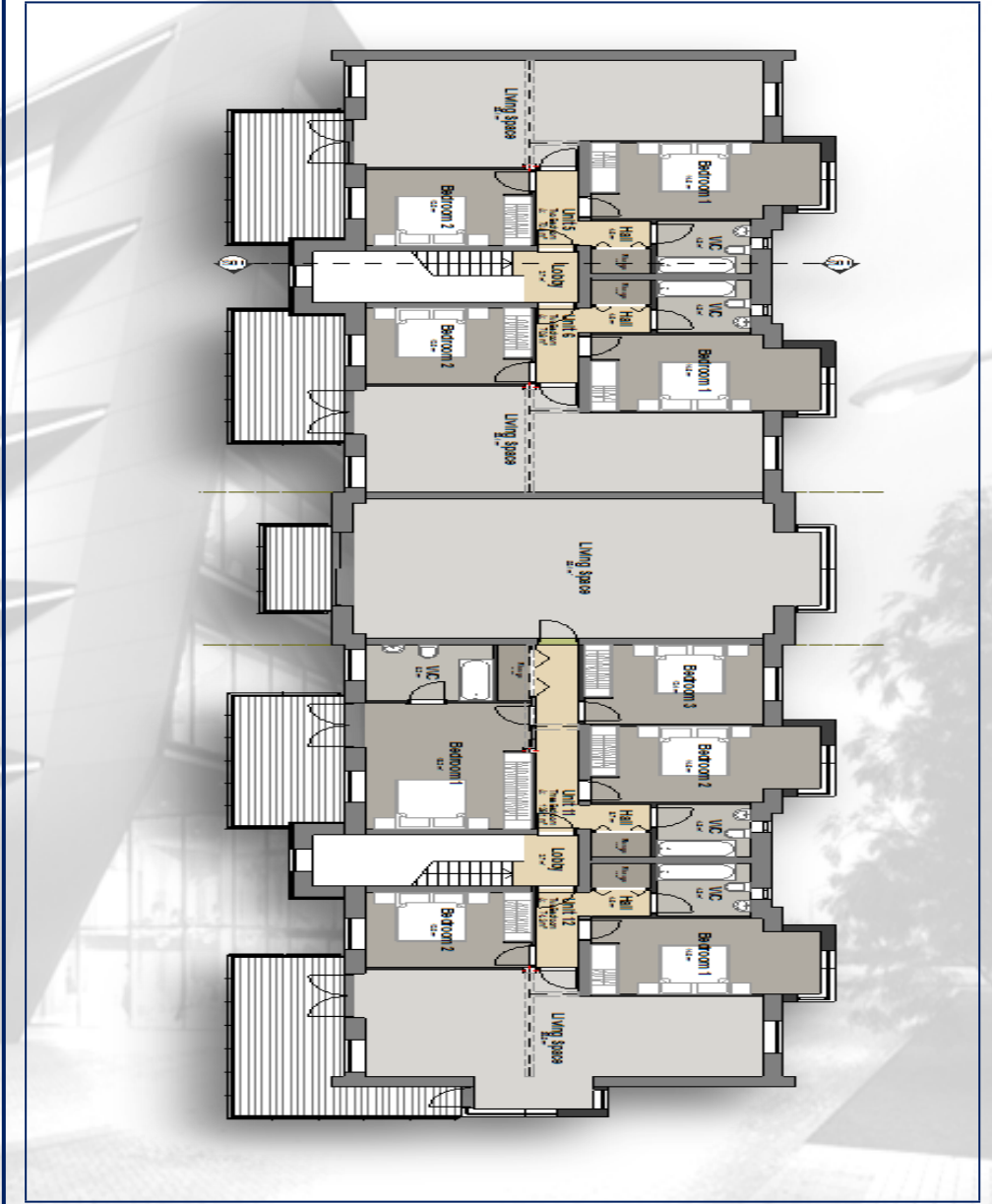


International Banks approved by Alma Capital Holding Group



psa

Project Management



❖ The Company:

PSA Project Management Limited was formed in 2009 as a company to incorporate the diverse abilities and knowledge of its Directors and Senior Project Managers to provide an International Standard service within the Development and Construction Industry.

Established in 2009, PSA Project Management is a dynamic and innovative international provider of project management services to the development and construction marketplace.

Our UK office is located in West Wickham and we also boast associate offices in Belgium, Ireland, Malta and the UAE.

❖ The Team:

Our PSA Project Management Limited team has been involved in the acquisition, design, and management of many construction and development contracts throughout Great Britain.

The combined knowledge of the Senior Project Managers adds up to over 150 years.

Our Team Leaders provide specialist knowledge dependent on the requirements of the project.

We have recently expanded into the Middle-East region and Malta, bringing our vast knowledge and experience in project management to this rapidly expanding commercial and residential market.

❖ Our Approach:

PSA Project Management has resources and specialist expertise at our disposal to enable us to provide an innovative and practical approach to our clients' needs, irrespective of scale or complexity.

We can oversee and co-ordinate the input of various diverse industry professionals to ensure the delivery of projects to programme and on budget for our clients.

PSA Project Management provides a practical approach, incorporating creative problem solving: from the initial concept planning and development stage, through all phases of the project, to successful completion and handover.

Our extensive experience in all types of commercial, industrial, sport or / leisure, educational and residential buildings illustrates the diversity and success of our practice. Experienced and effective management and cost control procedures are assured at every stage of project development

We are also very progressive in the promotion of environmentally interactive and sustainable buildings and continue to invest time and resources in being aware of all the latest and evolving modern construction systems available internationally.

In summary, effective management and cost control procedures, combined with considerable experience in project management, architectural programming, development planning, civil and structural engineering, landscape planning, urban design, interior design, health and safety planning and environmentally interactive sustainable buildings, allow for smooth operations and 'on time' delivery.

❖ Why PSA Project Management:

- We boast a wealth of experience working across a vast range of sectors.
- Our team are highly skilled, professional practitioners, and have all worked in the industry for at least two decades.
- Our approach is a “can do” one – we are a complete solutions provider.
- We can deliver total project management from concept to commissioning.
- Adding value to our clients’ projects is par for the course.
- You can rely on attention to detail and customer care that is unrivalled and an overall service which continues to earn us repeat business from major clients in the Development & Construction Industry.
- **Our Locations:**
Established in 2009, PSA Project Management is a dynamic and innovative international provider of project management services to the property development and construction marketplace. Our UK office is located in West Wickham and we also boast associate offices in Belgium, Ireland, Malta and the UAE.
- **Our Experience:**
Our ability to combine & use 150 years of history, knowledge and experience with the hunger, vigour and determination of a youthful Management structure and staff.
- **Our Resources:**
We have resources and specialist expertise to address projects of any scale or complexity. We deliver total development project management from concept to commissioning.
- **Our Methods:**
Effective management and cost control procedures, combined with considerable experience in project management for each and every client.



❖ The Background:

- **PSA Project Management Limited** was formed in 2009 to provide a multi-disciplined service to clients wishing to carry out large and diverse projects across the full range of the Construction Industry.
- The strategic partners of the company are Declan Cronin and David Crowe.
- **Declan Cronin** is a Quantity Surveyor by profession and specialises in Cost Analysis and Value engineering and has been lead director in a number of Quantity Surveying Practices and still retains selective consultancies in a number of such companies in both UK & Ireland.
- Declan has been involved in all aspects of Bill of Quantities including take off, pricing, re-measure, final accounts, claims, counter claim, extensions of time, L&A Damages, arbitration, settlement and negotiation.
- He has 25 years practical experience in the building and civil engineering industry. Understanding all forms of contract and associated law with regard to construction and engineering.
- Considerable experience in the preparation of complex final accounts and claims. Analysis of construction programmes, identification of delaying events and their effect on the date for completion. Forensic planning and retrospective delay analysis, tender planning, contract planning, progress monitoring and corrective planning. Preparation and defence to delay and extension of time claims. Working with solicitors and counsel. The preparation of expert reports for litigation and arbitration. Referral and response advice and representation in adjudications. Preparation of opening statements and representation in conciliations and mediations. Acting as mediator in the successful resolution of disputes.
- David Crowe is also a Quantity Surveyor with a long history in Construction and Developments companies at CEO level. He also retains selective consultancy positions in a number of such companies.
- David has been involved in all forms of Construction working with both Contractors, Consultants, Government Bodies, Medical Institutions and assembled a unique and in depth knowledge of all forms of construction, system build, fast track delivery, fit outs for all types of commercial and residential construction forms including multi storey office and apartment complexes, public buildings, and infra structural projects, throughout the UK & Ireland.
- PSA have had the considerable experience of being involved in all aspects of design, costing, supervision, planning, specification, negotiation, management, supervision and delivery of multi million Euro projects such as Mixed use and residential developments, roads & bridges, office complexes, Shopping Malls, Cinemas & Leisure complexes, Holiday Home Schemes, Multi Storey Car Parks, Hospital and Healthcare, Banking and Financial Centres, Public Buildings, Hotels, Schools and Education Institutes, in Ireland, the UK, Ireland, Malta, Belgium, Germany, Haiti and MENA.
- The Company currently has offices in London, England and Cork, Ireland.
- It also has associate offices in Malta and Dubai.
- Within the confines of various NDA's signed and confidentiality agreements with a number of clients, it is hoped that this profile will provide an overview of the background to PSA Project Management Limited, a sample of the Contracts undertaken historically by the Company, an indication of its capabilities, and a review of selected projects.

❖ The Present:

- PSA currently have a number of in-house Quantity Surveyors, Designers, Engineers and Project Managers involved in a diverse number of projects.
- They work as in house consultants to Alma Capital Holding Group.
- PSA is also involved both contractually and at board level as Consultants with a number of practices and Construction companies that it worked with in a number of Projects teams we have been privileged to work with and lead.

❖ Strategic Partnerships:

- **The Planning Partnership**
Strategic Town Planners
www.theplanningpartnership.ie
- **O'Mahony Pike**
Award winning Master Planners & Residential Architects
www.omparchitects.com
- **Wilson Architecture**
International Commercial Architects
www.wilsonarchitecture.ie
- **Astbury Shepherd Gilmour (ASG)**
Consulting Civil Engineers
www.shepherd-gilmour.com
- **Lynch & Associates**
Consulting Engineers specialising in Industrial Applications
www.lynch-assoc.ie
- **DKP international**
Building Services, utilities, desalination, water & power
www.dkpinternational.com



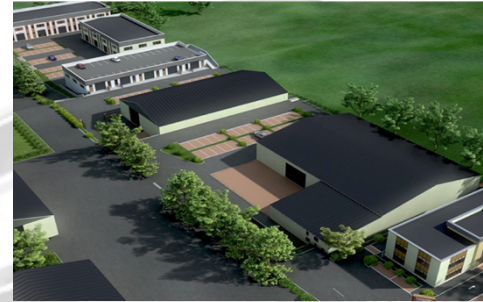
❖ Contractors and industry Specialists:

- **Stanta Building Systems**
Specialist fast track steel frame construction for Healthcar
www.stanta.ie
- **Thermohouse**
Thermally efficient residential construction, cooling without AC.
www.thermohouse.ie
- **Kingspan**
Industrial building systems.
www.kingspan.com
- **MMD**
Medical and Educational Contractor.
www.mmd.ie
- **Street Cranes**
Quayside & Industrial crane & lifting storage solutions.
www.streetcrane.it
- **Sisk Group**
Healthcare and Medical Facility Contractors.
www.siskgroup.com
- **Mivan, Fit Out & Construction**
General contractor and Fit-out specialists.
www.mivan.com
- **John Paul Construction**
Roads & Bridges.
www.johnpaul.ie
- **CField Construction**
Large Scale Residential & Healthcare Contractor.
www.cfieldconstruction.com
- **Shell**
Petroleum Specialists.
www.shell.com
- **Barr and Wray**
Desalination specialist.
www.barrandwray.com



❖ Sample Projects:

- **Blarney Hotel & Golf Resort, Cork Ireland**
Project Value - €35,000,000.
- **Baltimore Liesure Resort, Cork**
Project Value - €5,000,000.
- **Office Block, Brussels, Belgium –**
Project Value - €38,000,000.
- **Luxury Apartment Block, London**
Project Value - £19,000,000.
- **Office Suites for Opel, Kontick, Germany**
Project Value - €23,500,000.
- **Office Refurbishment, Dusseldorf, Germany**
Project Value - €18,000,000.
- **New Multi Storey, Office Buidling Haiti**
Project Value - \$25,000,000.
- **Cork University Hospital, Ireland**
Project Value - €42,000,000.
- **Brooklodge Business Park, Ireland**
Project Value - €7,500,000.
- **Cork International Airport, Ireland**
Project Value - €60,000,000.





Gallery





Our Team



Eng. Medhat Al Habbab
Chairman & CEO



Mr. David Crowe
Vice Chairman & Projects Director



Dr. Stephen Lo
**Legal Affairs Director
Headquarters**



Dr. Khalil Al Habbab
**Executive Director
Middle East, Asia and Africa Region**



Ms. Asmaa Abdelghany
**Client Relations Manager
Middle East, Asia and Africa Region**



Mr. Salah Abuzied
**Africa Regional Director
Middle East, Asia and Africa Region**



Mr. Khalid Hussein
**Asia Regional Director
Middle East, Asia and Africa Region**



Mr. Ihab Hegazy
**Middle East Regional Director
Middle East, Asia and Africa Region**



Contact Us

❖ **Headquarters:**

15/F, 100 QRC, 100 Queens Road Central, Central, Hong Kong
Tel: +852 2824 8558 - Fax: +852 3180 9399
E-mail: info@almacapitalholdinggroup.net
Website: www.almacapitalholdinggroup.net

❖ **Follow Us:**



<https://www.linkedin.com/company-beta/18098446/>



<https://www.facebook.com/Alma-Capital-Holding-Group-831700950331169/>



Thank You